

EP Winter Survey 2025



26354 interviews | Methodology (EU27): Face-to-face*
9 January 2025 - 4 February 2025



1011 interviews | Methodology (EL): Face-to-face
9 January 2025 - 29 January 2025

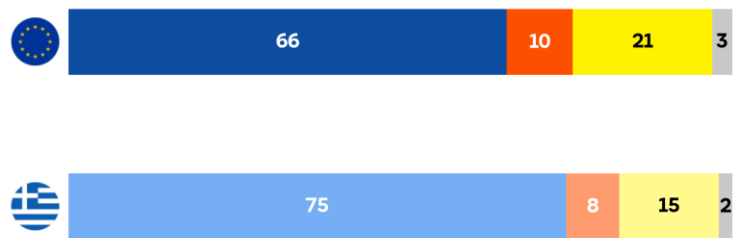
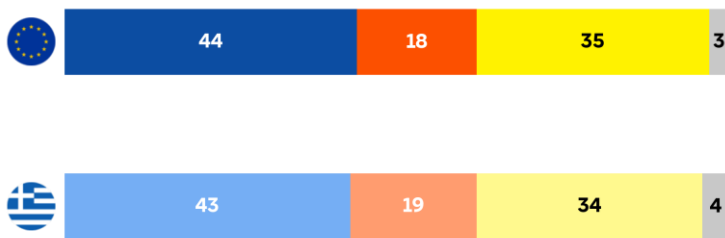
*Including CAVI (Computer-assisted video interviewing) in Czechia, Denmark, Malta, Netherlands, Finland and Sweden

Factsheet Greece

ROLE OF THE EU

QA10. Would you say that over the next years the role of the European Union in the world will become...? (%)

QA12.2. Would you say that: in the future, the role of the European Union to protect European citizens against global crises and security risks should become...? (%)



More important Less important Stay the same Don't know

ASPECTS THE EU SHOULD FOCUS ON TO REINFORCE ITS POSITION IN THE WORLD

QA11ab. Thinking about the future, which of the following aspects should the EU focus on in order to reinforce its position in the world? Firstly? And then? (MAX 3 ANSWERS) (%)



EP Winter Survey 2025



26354 interviews | Methodology (EU27): Face-to-face*
9 January 2025 - 4 February 2025



1011 interviews | Methodology (EL): Face-to-face
9 January 2025 - 29 January 2025

*Including CAVI (Computer-assisted video interviewing) in Czechia, Denmark, Malta, Netherlands, Finland and Sweden

Factsheet Greece

FACING GLOBAL CHALLENGES

QA13. To what extent do you agree or not with each of the following statements? (%)

EU Member States should be more united to face current global challenges



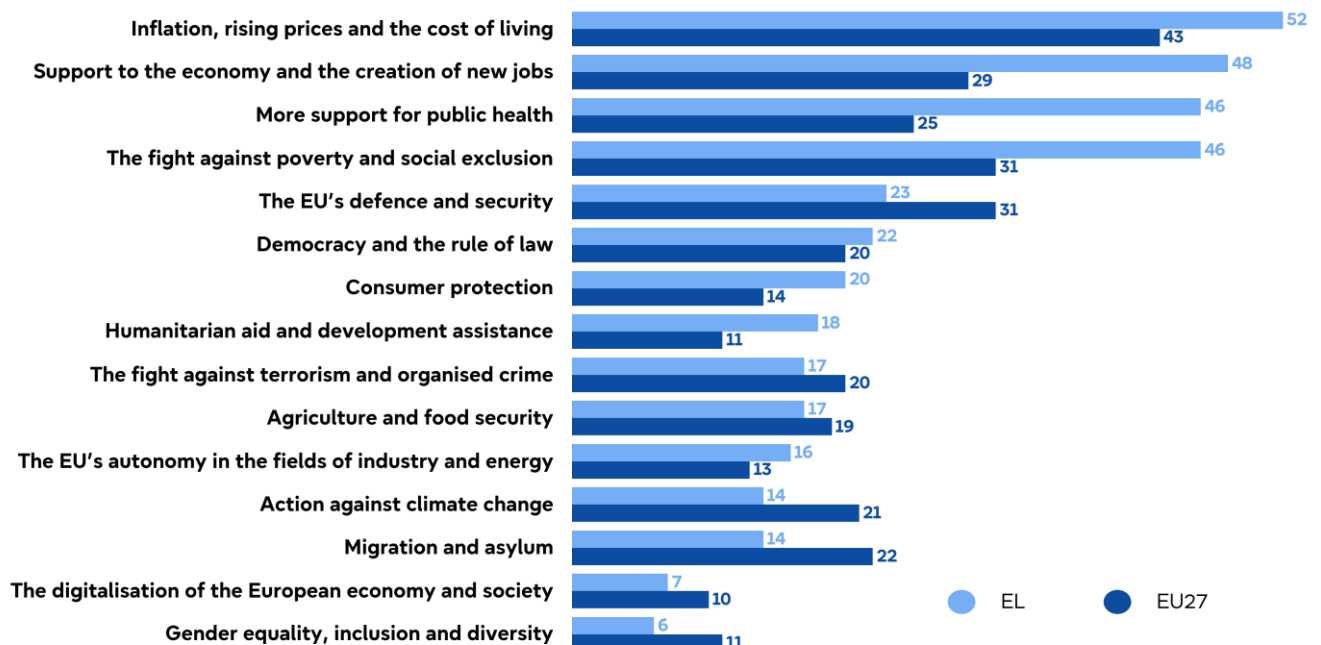
The European Union needs more means to face current global challenges



● Total 'Agree' ● Total 'Disagree' ● Don't know

CITIZENS' PRIORITIES

QA8ab. Which of the following topics would you like to see addressed in priority by the European Parliament? Firstly? And then? (MAX 4 ANSWERS) (%)



● EL ● EU27

EP Winter Survey 2025

26354 interviews | Methodology (EU27): Face-to-face*
9 January 2025 - 4 February 2025

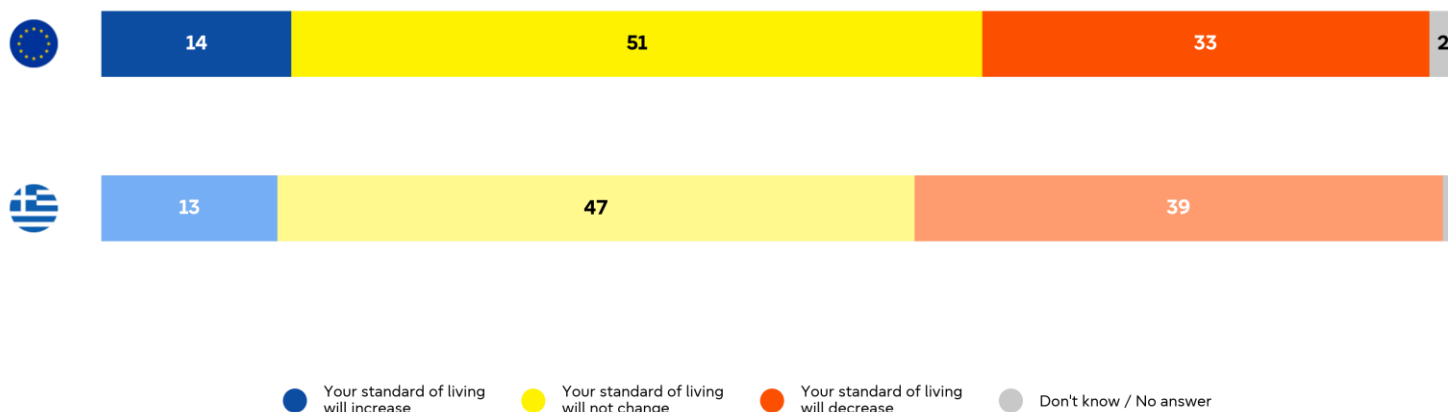
1011 interviews | Methodology (EL): Face-to-face
9 January 2025 - 29 January 2025

*Including CAVI (Computer-assisted video interviewing) in Czechia, Denmark, Malta, Netherlands, Finland and Sweden

Factsheet Greece

STANDARD OF LIVING

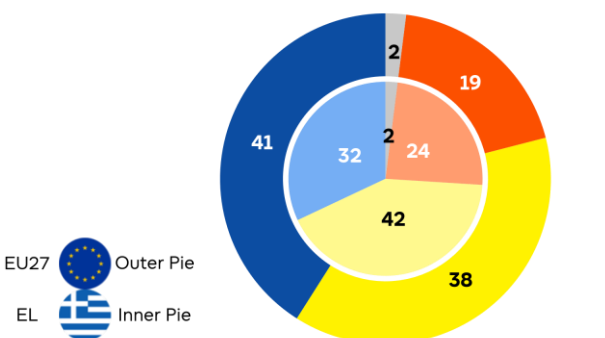
SD27. When you think about the way your personal standard of living will evolve over the next five years, which of the following statements best describes your expectations? (%)



● Your standard of living will increase
 ● Your standard of living will not change
 ● Your standard of living will decrease
 ● Don't know / No answer

IMAGE AND ROLE OF THE EUROPEAN PARLIAMENT

QA1. In general, do you have a very positive, fairly positive, neutral, fairly negative or very negative image of the European Parliament? (%)

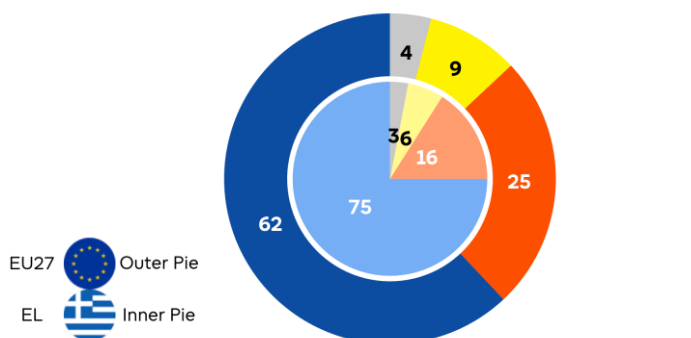


● Total 'Positive' ● Total 'Negative'
● Neutral ● Don't know

	EU27	EL
Total 'Positive'	41 1 ▼	32 2 ▼
Neutral	38 1 ▼	42 =
Total 'Negative'	19 1 ▲	24 =
Don't know	2 1 ▲	2 2 ▲

▲▼ (Jan/Feb 2025 - Jun/Jul 2024)

QA2. Would you personally like to see the European Parliament play a more important or less important role? (%)



● More important ● No change / As it is now (SPONTANEOUS)
● Less important ● Don't know

	EU27	EL
More important	62 6 ▲	75 2 ▲
Less important	25 3 ▼	16 =
No change / As it is now (SPONTANEOUS)	9 1 ▼	6 1 ▼
Don't know	4 2 ▼	3 1 ▼

▲▼ (Jan/Feb 2025 - Feb/Mar 2024)

EP Winter Survey 2025

26354 interviews | Methodology (EU27): Face-to-face*
9 January 2025 - 4 February 2025

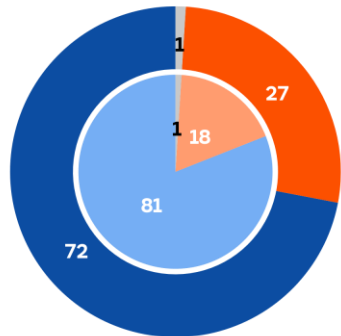
1011 interviews | Methodology (EL): Face-to-face
9 January 2025 - 29 January 2025

*Including CAVI (Computer-assisted video interviewing) in Czechia, Denmark, Malta, Netherlands, Finland and Sweden

Factsheet Greece

IMPACT OF EU ACTIONS ON CITIZENS' LIVES/ EU MEMBERSHIP

QA3. Would you say the actions of the EU have an impact on your daily life? (%)



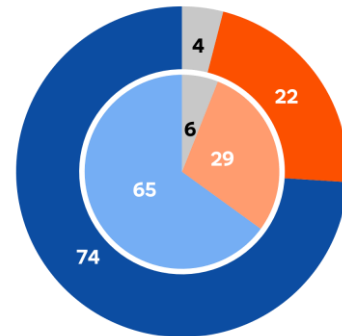
EU27 Outer Pie
EL Inner Pie

● Total 'Yes' ● Don't know
● Total 'No'

	EU27	EL
Total 'Yes'	72 =	81 5 ▼
Total 'No'	27 1 ▲	18 4 ▲
Don't know	1 1 ▼	1 1 ▲

▲▼ (Jan/Feb 2025 - Jun/Jul 2024)

QA4. Taking everything into account, would you say that (OUR COUNTRY) has on balance benefited or not from being a member of the EU? (%)



EU27 Outer Pie
EL Inner Pie

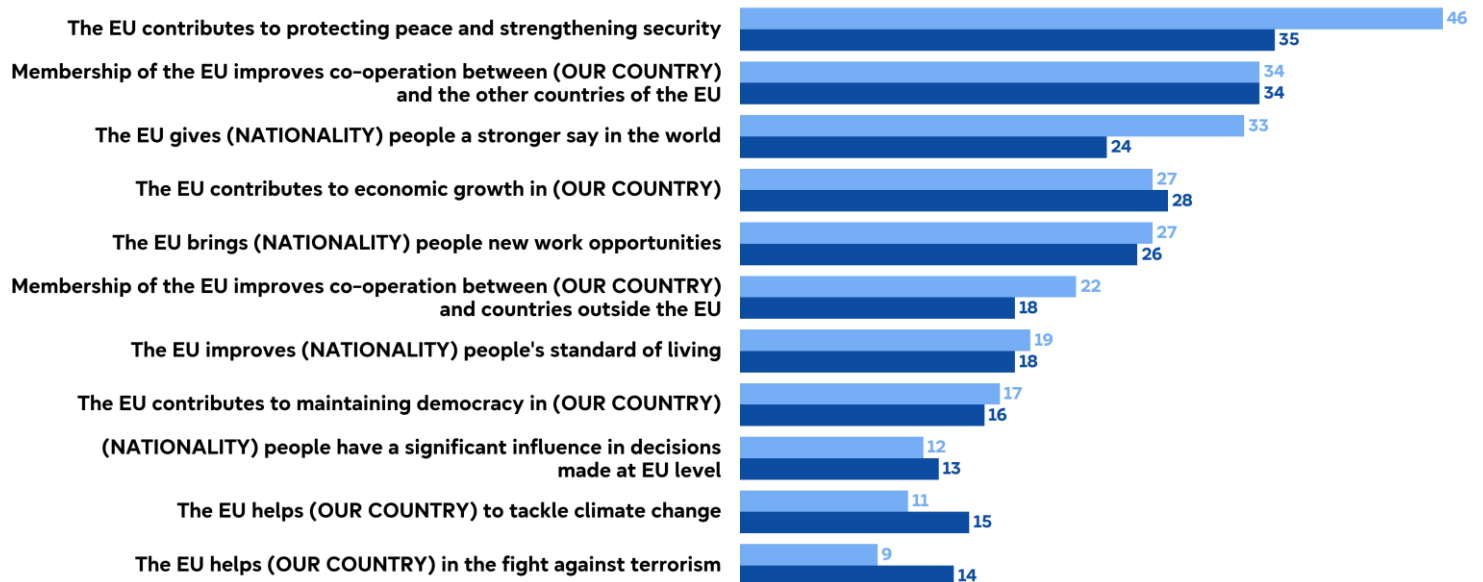
● Benefited ● Don't know
● Not benefited

	EU27	EL
Benefited	74 4 ▲	65 =
Not benefited	22 2 ▼	29 2 ▼
Don't know	4 2 ▼	6 2 ▲

▲▼ (Jan/Feb 2025 - Jun/Jul 2024)

BENEFITS OF EU MEMBERSHIP

QA5ab. Regardless of whether you think (OUR COUNTRY) has benefited or not from being a member of the EU, which of the following are the main reasons why people think (OUR COUNTRY) has benefited from being a member of the EU? Firstly? And then? (MAX 3 ANSWERS) (%)



● EL ● EU27